



## **NATURAL STONE**

## Who we are :

Consistent group manufacturer of high quality concrete bricks and blocks using high tech machineries has now forayed into manufacturing of Porcelain Tiles and Sandstone with innovative technologies having minimal impact on environment and ease and faster constructions. The products will be used in structures be it industrial, commercial, residential, Highway projects etc. which will last forever.

## Our ethos

### Vision:

To be recognized as a leader in integrated solution providing, optimization of design, procurement and installation of high quality façade products across the country.

### Mission:

To provide the best façade material with impeccable service to create timeless building elevations.

### Values:

We believe in keeping ourselves ahead of time and churn out something new in the field of construction. To push our trained staff, who are the backbone of our company and bring out the best in the dynamic construction scenario.

# INDEX

<b>Wall Covering</b> Stellar Collection	04 - 05
<b>Outdoor Flooring</b> Cerapave-Porcelain Tiles	06 - 09
<b>Facade</b> Sand Stone	10 - 15
<b>Stone Crafts</b> Stone Screen	17 - 19
<b>Tiles Edges</b>	21
<b>Laying Pallerns</b>	22 - 23
<b>General Information</b>	24
<b>Our Other Products</b>	25



Rock (Venatino)

90x45 cm



ST - 04

120x60/90x60 cm



ST - 05

120x60/60x60 cm



Crushed Box - Venatino

120x60/60x60 cm

# OUTDOOR FLOORING

CERAPAVE - PORCELAIN TILES

ROMA GREY



BIERZO BLACK SLATE



## FIRENZE BEIGE



## PRIORAT MULTI COLOUR SLATE



# OUTDOOR FLOORING

CERAPAVE - PORCELAIN TILES

ZURICH SILVER GREY QUARTZITE



PADUA GREY





## AUVERGNE BASALT



## TORINO DARK



# FACADE

SAND STONE

RUGGED



Jodhpur Beige



Jodhpur Beige

## RUGGED



Golden Oak



Imperial White



Ochre Yellow



Porphyry



Jodhpur Beige

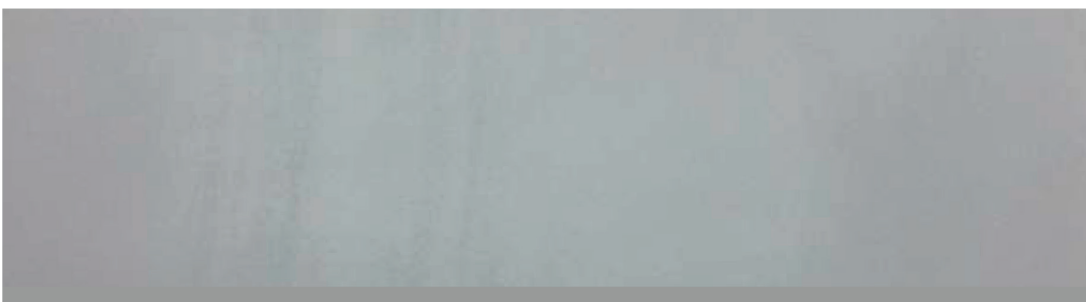


Oyster Grey

### OYSTER GREY



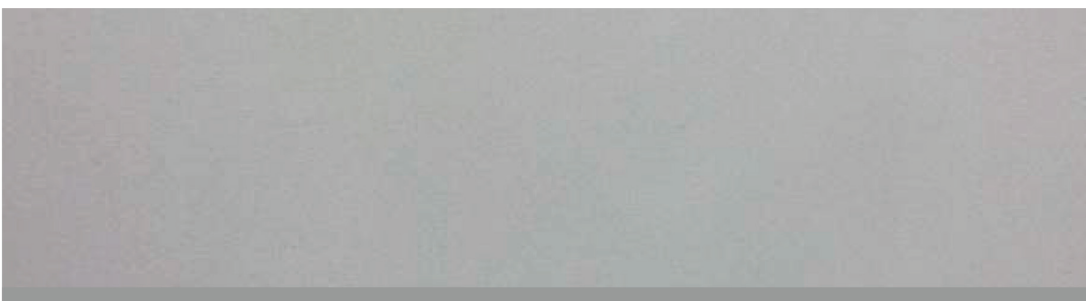
Suede



Matt

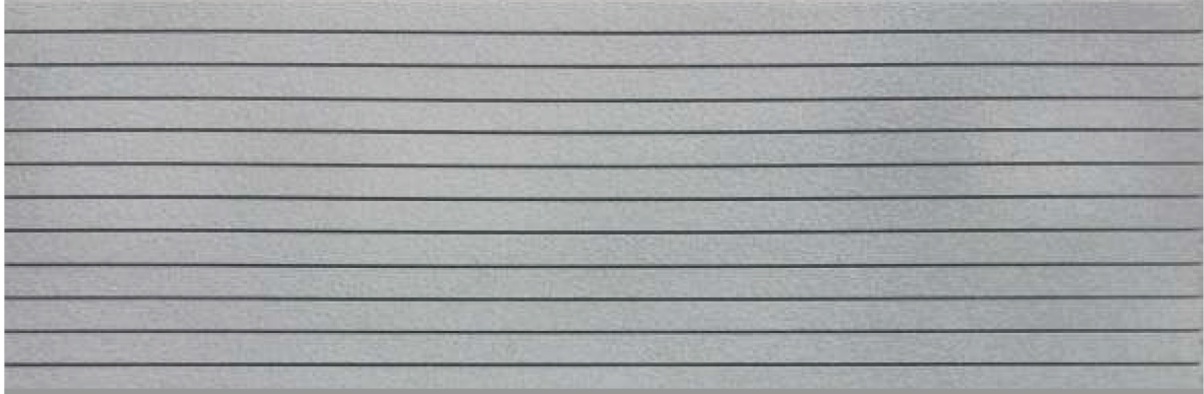


Riverwashed



Sanded

## OYSTER GREY



Oyster Grey Suede with H 25 Groove

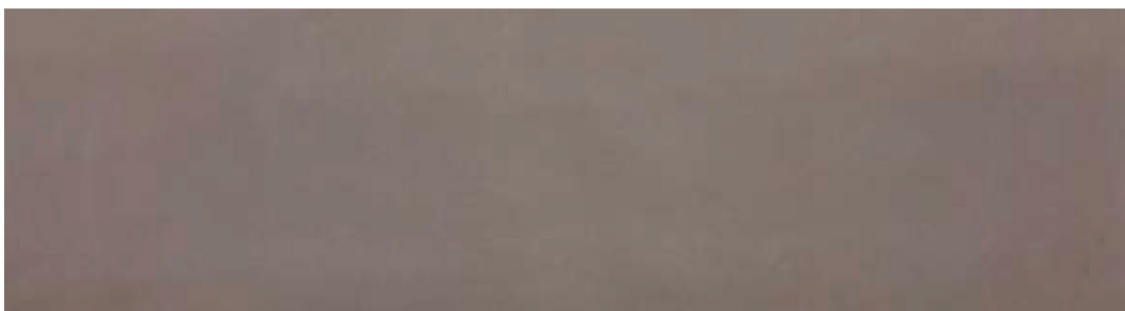


Oyster Grey Suede with H 25 Groove

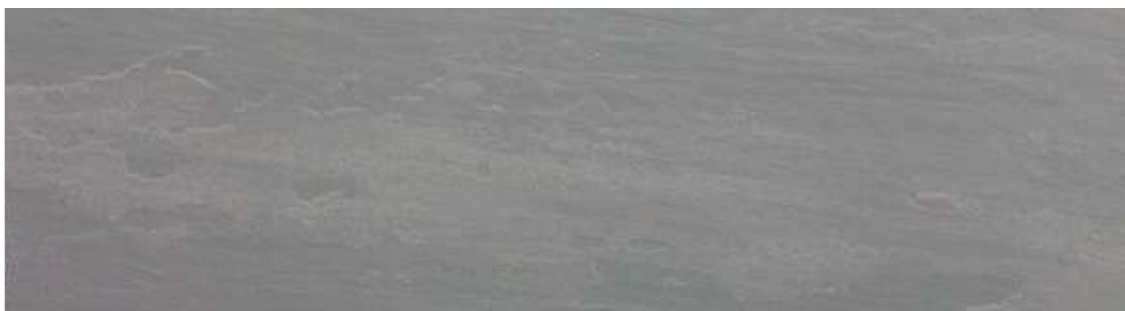
### SOFT MOCHA



Suede



Matt



Riverwashed



Sanded

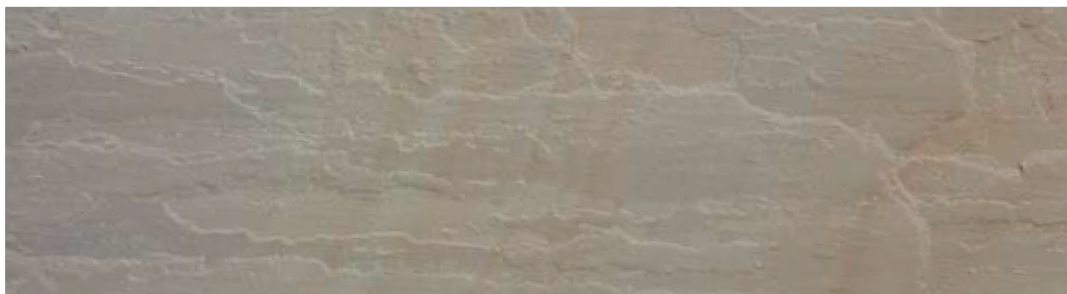
## GOLDEN OAK



Suede



Matt



Riverwashed

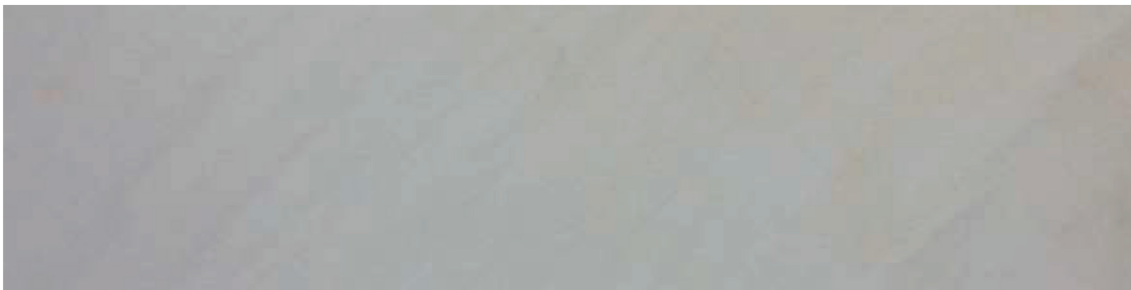


Sanded

### OCHRE YELLOW



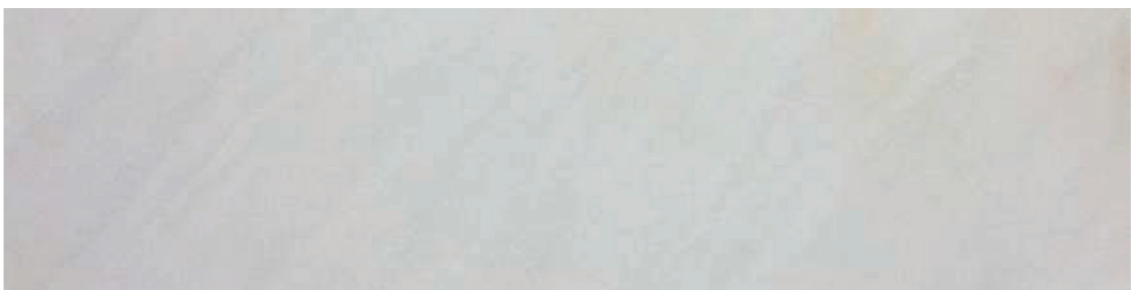
Suede



Matt



Riverwashed



Sanded



## STONE SCREEN



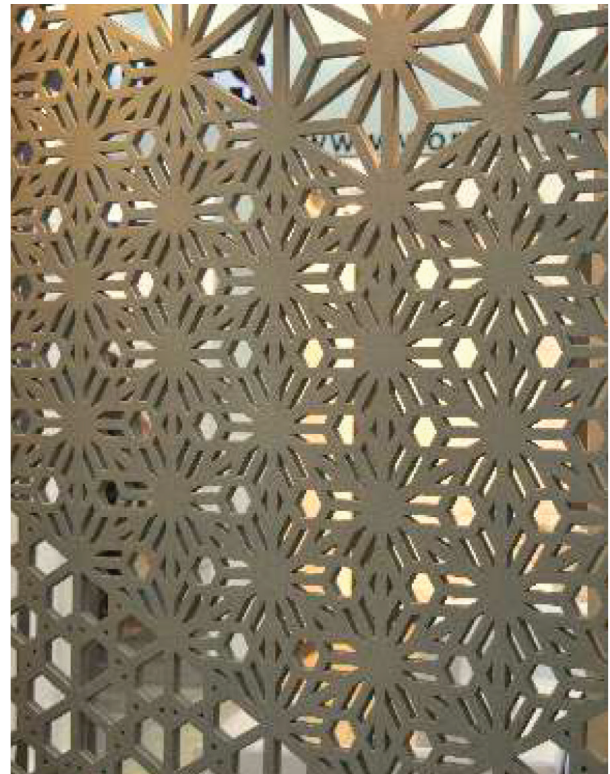
Ochre Yellow

SS - 01



Ochre Yellow

SS - 04



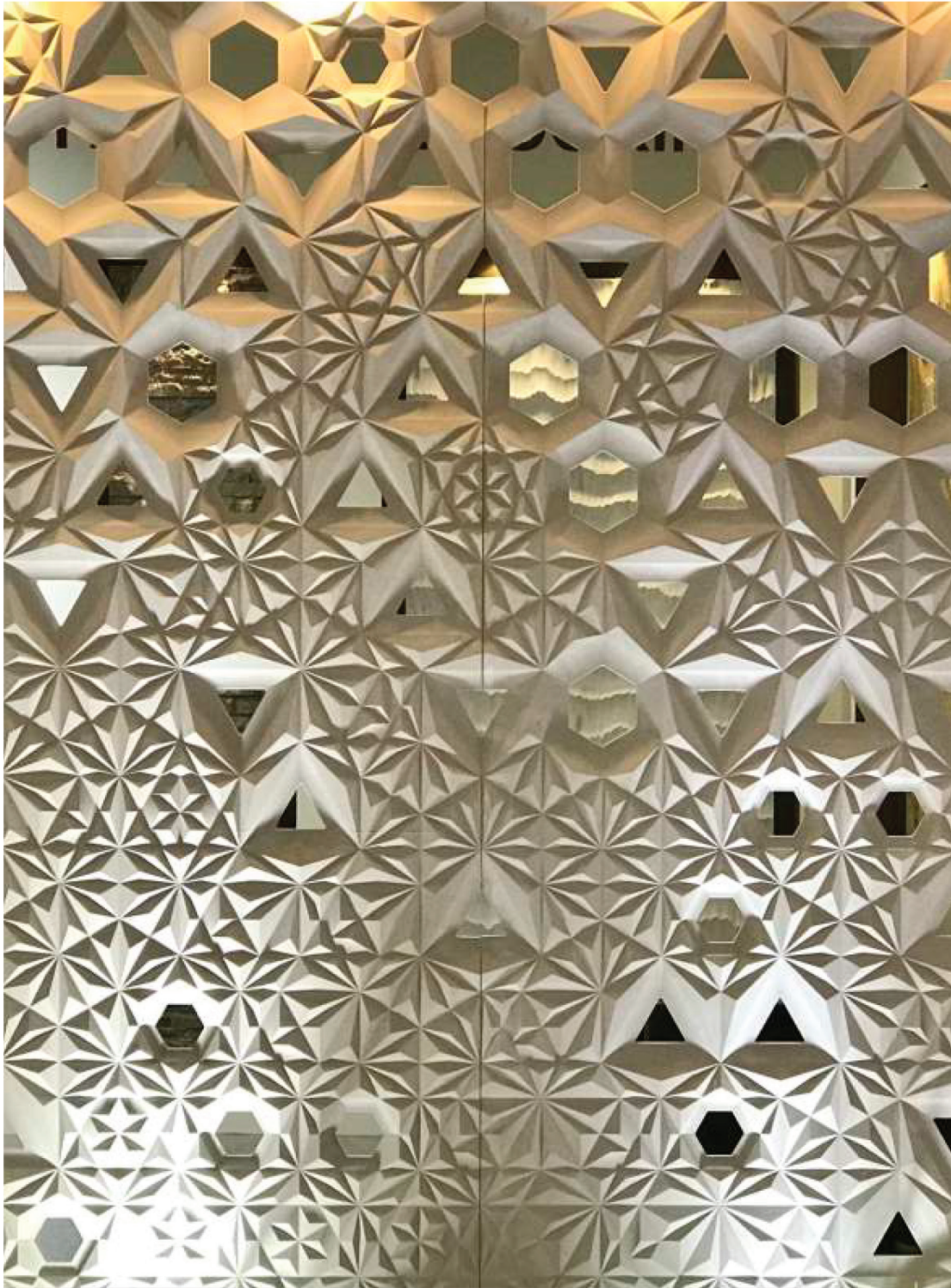
Bahamas Grey

SS - 05



Beige Marble

SS - 03



Ochre Yellow

SS - 07



Geometrical - Rainbow



Straight - Oyster Grey

Standard Dimensions :  
Straight - Oyster Grey : 30x30x40cm  
Geometrical - Rainbow : 30x30x40cm



Garden Table, Twisted Seats - Seashell Rose

Standard Dimensions :  
Garden Table : 55x45x80cm  
Twisted Seats : 30x30x50cm  
Wave Bench : 125x30x45cm



Wave Bench - Rainbow

## TILE EDGES



**Beveled Edge :** A tile with the top edge chamfered, creating an angled edge.



**Tumbled Edge :** Tiles that are placed in a vibrator or a diagonal drum to produce aged and softened edges and surface.



**Pillowed Edge :** It is a rounded 1" or 2" edge, which give the wall covering/flooring tile a cushion or pillow like appearance.



**Straight Edge :** A tile with sharp straight edge.



**Rockfaced Edge :** Edges are straight cut manually by hammer and chisel. Preferred where edges are seen after installation such as stair cases stepping stones, pools etc.



**Distressed Edge :** Edges are hand distressed to give natural worn out look.



**Profile Edge :** Edges are given the desired profile using profile cutters.

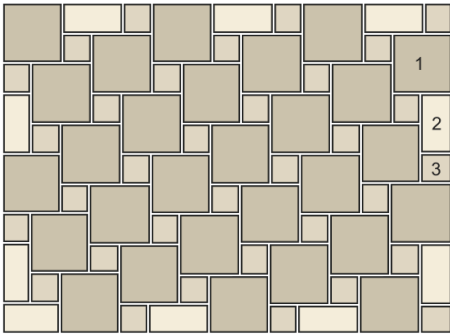


**Chiseled Edge :** Natural Stones tiles that are placed in chain breaker to produce more chiseled effect.



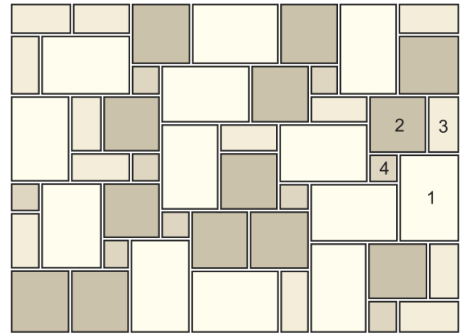
**Split Edge :** Edges are split manually by hammer and chisel.

### Dutch Pattern



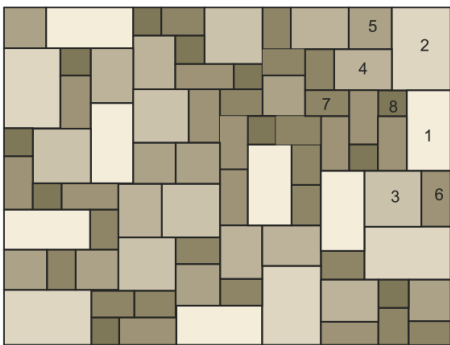
- 1 = 28 x 600 x 600
- 2 = 10 x 600 x 300
- 3 = 33 x 290 x 290

### Laying pattern in 600 Series - 4 Sizes



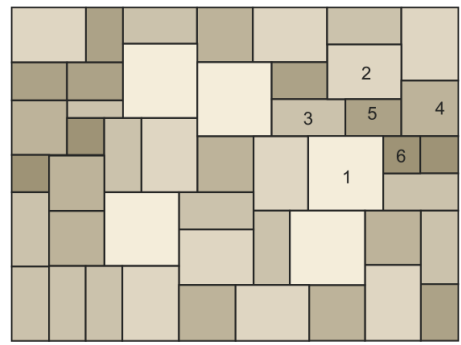
- 1 =
- 2 =
- 3 =
- 4 =

### Laying pattern in 560 Series - 8 Sizes



- 1 = 7 x 845 x 422
- 2 = 5 x 845 x 560
- 3 = 6 x 560 x 560
- 4 = 8 x 560 x 422
- 5 = 9 x 422 x 422
- 6 = 13 x 560 x 275
- 7 = 18 x 422 x 275
- 8 = 11 x 275 x 275

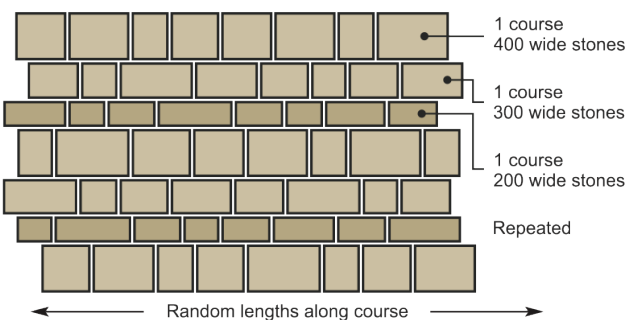
### Laying pattern in 600 Series - 6 Sizes



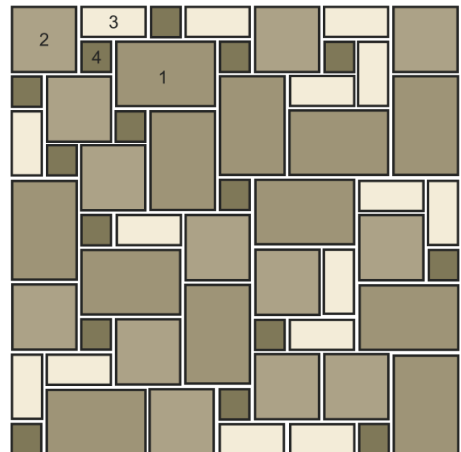
- 1 =
- 2 =
- 3 =
- 4 =
- 5 =
- 6 =

### 400/300/200 x Random Lengths

A random laying pattern made up of three widths and random lengths.



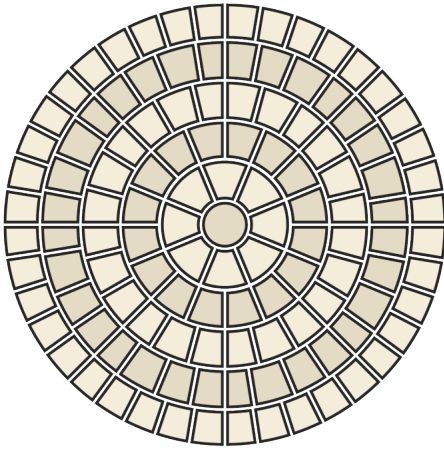
### Laying pattern in 560 Series - 4 Sizes



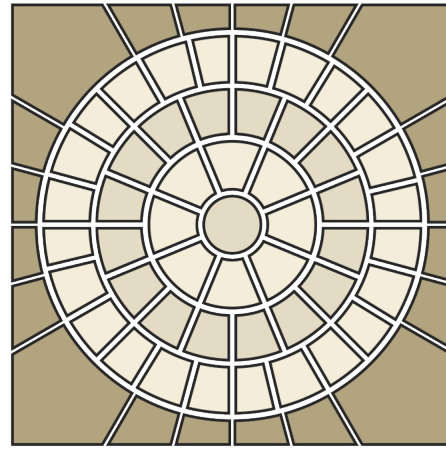
- 1 =
- 2 =
- 3 =
- 4 =

# LAYING PATTERNS

Old Rectory Cobble Circle  
1.8m Diameter Circle Kit



3.3mø circle with 3.65m2 squaring off kit

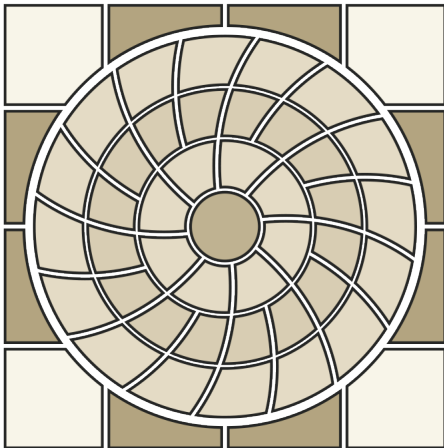


Circle kit consist of:

- A 16 = outer
- B 16= middle
- C 8= inner
- D 1= center

Squaring off kit consists of:  
• 20 = squaring off pavers

Squaring off kit consists of:

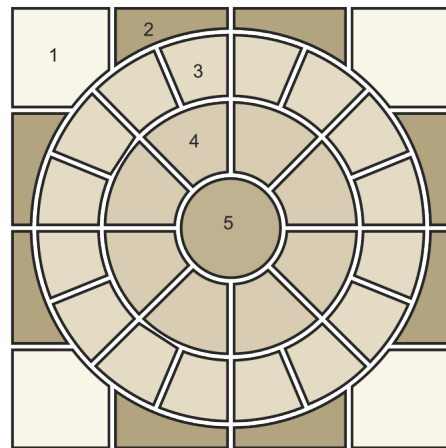


Circle kit consist of:

- A 16 = outer
- B 16= middle
- C 8= inner
- D 1= center

Squaring off kit consists of:  
• 20 = squaring off pavers

2.46mø circle with 2.72m2 squaring off kit

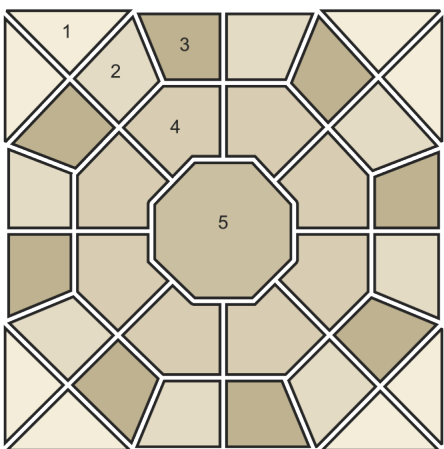


Circle kit consist of:

- A 16 = outer
- B 8= inner
- C 1= center

Squaring off kit consists of:  
• 20 = squaring off pavers

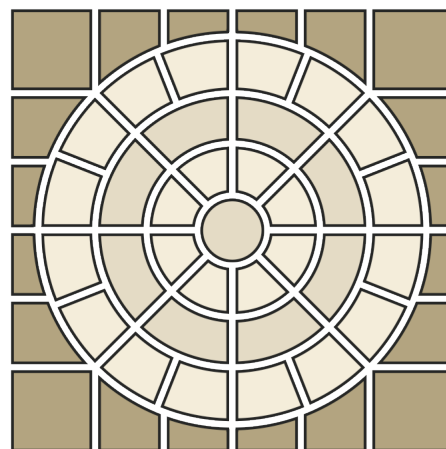
6.25m2 octagon



Availabe in:  
Natural SandStone

kit consist of:

- A 1= center
- B 8= inner
- C 16 = outer
- D 8=Squaring



2.8 Diameter Circle with  
Squaring off Kit finished  
Size: 3.08x3.08m  
4 Corner per kit

# GENERAL INFORMATION

## Colour

Every effort has been made to give true representation of colour in these photographs. Due to natural variation in the products, each stone and therefore each floor and wall will have its own unique character and appearance. It is important to view a range of samples to acknowledge the authentic diversity in colours, texture and markings.

## Dimensions

All dimensions quoted in this brochure are nominal and are subject to manufacturing tolerance.

## Stain Removal Suggestions

There are various products available for stain removal in the market. Necessary safety precautions like gloves and safety glasses should be used while using the same. These products should be kept out of reach of children.

We are hereby listing some remedies for stain removal:

### Cause

### Remedy

Oil/Grease	Petrol on cotton waste
Hairspray	acetone
Coffee or tea	diluted ammonia
Shoe polish	petrol
Dyes	bleach
Ink, pencil	hydrogen peroxide
Rust	solution of oxalic acid in methylated spirit
Fruit	acetone
Wine	bleach
Acrylic Paint	bleach
Jam / Fruit	diluted hydrogen peroxide
Water Paint	ammonia

Kindly note some natural stone pieces may contain small iron content and when in contact with water can oxidize causing rust marks to the surface of paving. There are some cleaners available in the market especially formulated for rust removal.

## Maintenance & Sealers

Regular maintenance is required to keep the overall appearance of the product in pristine condition. General maintenance for internal products simply requires mopping with mild detergent to remove household dust & dirt.

We suggest use of sealers from Dupont. There are sealers available to give same appearance, semi gloss, high gloss etc.

Kindly read product handling instructions carefully before using it.

## Health and safety

Some products in our range are heavy. It is suggested that items which are heavy over 25 kg or those that are awkward in shape should be handled by more than one person or by suitable lifting equipment. It is suggested that work gloves, eye protection and respiratory protection are used whenever appropriate.

## Trading Terms

The same is available on request.

## Please Note

Our policy is of continual improvement, innovation and development and as such we reserve the right to change specification without notice. Since it is a natural product its availability cannot be guaranteed forever and hence product can be discontinued if it is not available.



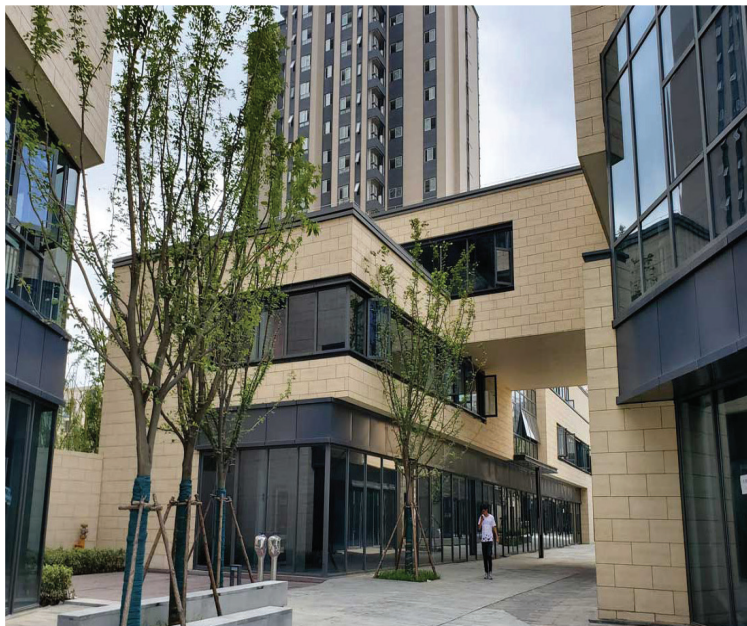
# OUR OTHER PRODUCTS



**Porcelain Tiles**



**Concrete Facade**



**Terracotta Facade**



**Aluminium Glass Facade**

**Head Office :**  
***CLADDING SOLUTIONS***

A 003, S.G. Business Hub.  
Near Adani Gas Pump,  
Bhagwat Vidhyapith Road, Gota,  
Ahmedabad,  
Gujrat - 380060

Ph : + 91 9931099933  
+ 91 9931099888

E -mail : vanshika@kankariaholdings.in



[www.kankariaholdings.in](http://www.kankariaholdings.in)



Kankaria Properties Private Limited



kankaria\_concrete

This brochure is not a legal offering. The information, offerings and specifications are indicative and are subject to change without any prior notice.

Note: Above specifications are applicable for standard products. Other specifications are also available as per customer requirement. Actual weights and dimensions may vary.